

AquaCare For Surgery & Laboratory

AquaCare

A SELECTION OF APPLICATIONS

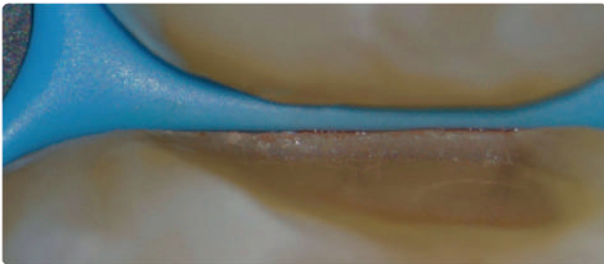
- AquaCare increases bond strength with its texturing of the cavity surface.
- Balanced, slim-line, fully autoclavable handpiece without bulky attachments.
- Incredibly versatile across a wide variety of restorative dental procedures.
- User-friendly with easy colour code cartridge system makes swapping between types of treatment effortless.
- Minimal need for anaesthetics combined with the lack of vibration, heat generation and noise leads to reduced patient anxiety. AquaCare is recognised as a practice enhancing product.
- Faster, more efficient cleaning for removing stains from all tooth aspects, even accessibly difficult pits and crevices, whilst also treating sensitivity. Patients love their brilliant smiles.



"Air abrasion from buccal and lingual to remove all debris. I use an AquaCare." **Dr. Lincoln Harris**, restoringexcellence.com.au



"Particle abrasion with 29 μ m Aluminium Oxide to remove aprismatic enamel and improve bond strengths prior to no prep direct bonding to close black triangles which were secondary to periodontal disease." **Dr. Jason Smithson**



"Always finish on 29 μ m Aluminium Oxide and Sylc." **Dr. Thomas Taha**



"Cleaning and conditioning old composites with AquaCare 53 μ m Aluminium Oxide." **Dr. Jordi Manauta**

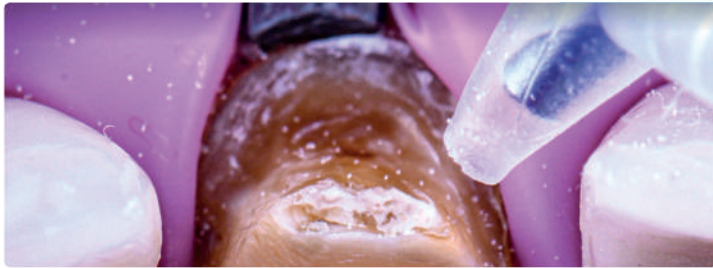


"Prepared with AquaCare only - no drilling 53 μ m Aluminium Oxide / 5 bar then Sylc for 30 seconds / 5 bar." **Dr. David Gerdolle**



"Cleaning with Sylc." **Dr. Griya Ridha Raharja**

DENTINE HYPERSENSITIVITY, REMINERALISING, IMPROVED BOND STRENGTH & STAIN REMOVAL



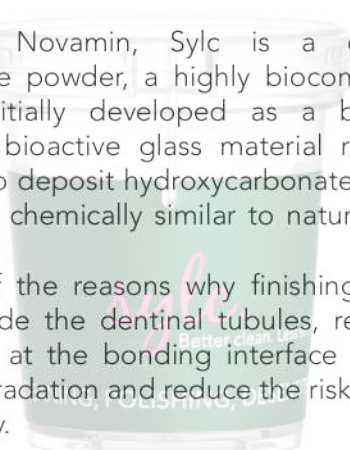
"Cleaning the composite leftovers and preparing the dentine surface for adhesion". Dr. Ivan Raychev



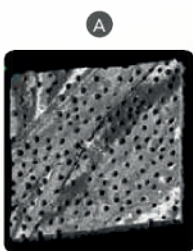
"Always finish on 29µm Aluminium Oxide and Sylc". Dr. Thomas Taha

Powered by Novamin, Sylc is a calcium sodium phosphosilicate powder, a highly biocompatible material which was initially developed as a bone conductive material. The bioactive glass material reacts with body fluids (saliva) to deposit hydroxycarbonate apatite (HCA), a mineral that is chemically similar to natural tooth mineral.

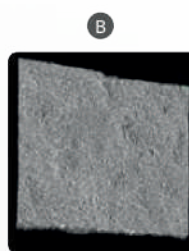
This is one of the reasons why finishing the cavity with Sylc will occlude the dentinal tubules, reduce the water-contamination at the bonding interface with consequent hydrolytic degradation and reduce the risk of postoperative hypersensitivity.



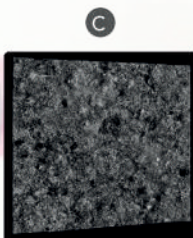
NO MAGIC, JUST SCIENCE



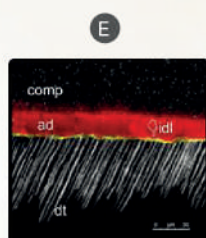
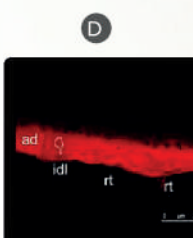
A: Dentine before air-abrasion. Note a smear layer-free surface with many patent dentinal tubules. (Confocal 3D topographic image)



B: Dentine treated using AquaCare and Sylc bioglass. Note the presence of a smear layer occluding the dentinal tubules and covering the entire dentine surface. (Confocal 3D topographic image)



C: Dentine treated using Sylc and conditioned with a universal adhesive in self-etching mode. Note the smear layer partially covering the dentine surface. A Bioglass-rich smear layer is still available for conversion into apatite at the resin-dentine interface. However, most of the dentinal tubules are occluded entirely; the risk for postoperative sensitivity here is very low. (Confocal 3D topographic image)

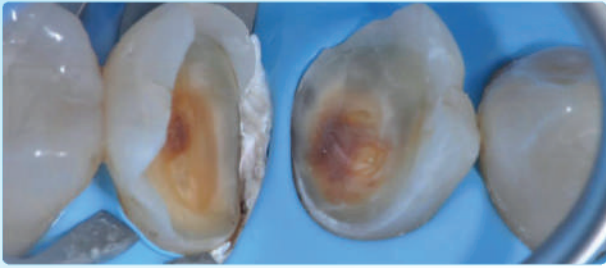


D: Universal adhesive applied in self-etch mode onto a dentine surface treated with AquaCare and Sylc bioglass. Note the adhesive (ad) was able to form a sound interdiffusion layer (IDL: hybrid layer) but with very few resin tags (rt). In the confocal single-projection image (E) it is possible to observe a reflective material obliterating the dentinal tubules. It is most likely that the bioglass particles have penetrated the tubules several microns during the air-abrasion procedures.

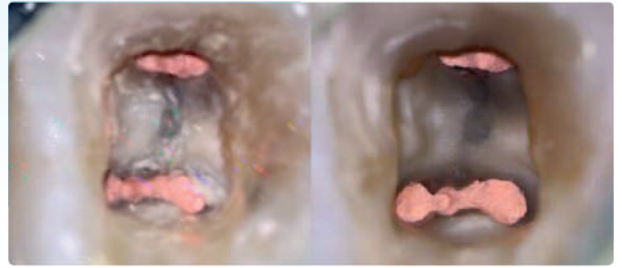
Prof. Dr. Salvatore Sauro,

Dental Biomaterials, Preventive and Minimally Invasive Dentistry, Universidad CEU-Cardenal Herrera, Valencia, Spain.

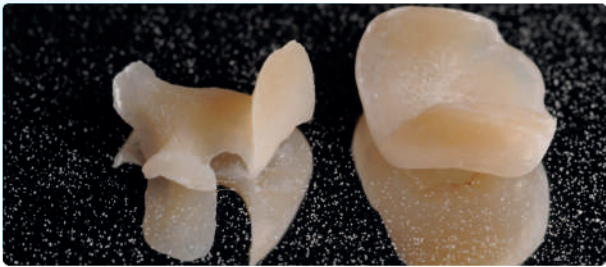
A SELECTION OF APPLICATIONS



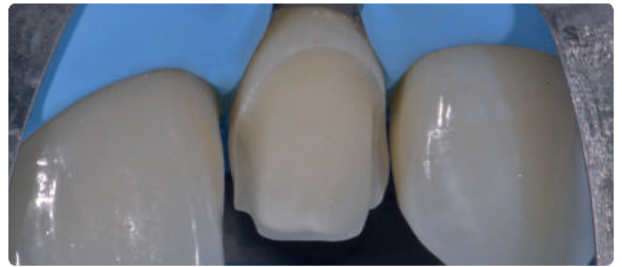
"Used 53µm Aluminium Oxide, then used electrosurgery and isolated by means of Ferrior Clamps and teflon. The image is after sandblasting and before etching." **Dr. Pasquale Venuti**



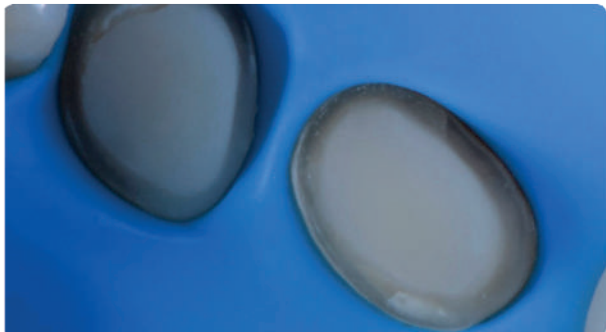
"Blasting with Sodium Bicarbonate and a curtain of water allows me to remove obturation cement from the floor of the pulp chamber, isthmuses or other retentive areas." **Dr. Freddy Belliard**



"AquaCare allows me finally to sandblast or prophylaxis inside and outside the mouth, with or without water, with the exact amount of media I want to deliver. I'm in full control now of those important procedures." **Dr. Walter Devoto**



"Particle abrasion with 53µm Aluminium Oxide to remove bonding resin used for temporaries, to clean adhesive surfaces and improve bond strengths before cementing four disilicate veneers." **Dr. Lorenzo Vanini**



"Always finish on 29µm Aluminium Oxide and Sylc". **Dr. Thomas Taha**



"Decontamination" **Dr. Florin Cofar**



"I don't use AquaCare every day, I use AquaCare every single patient"
Dr. Jason Smithson, UK



"In my modest opinion, AquaCare is the best tool to reach a perfect decontamination in adhesive dentistry" **Dr. Gianfranco Politano, Italy, Bio-Emulation**



"Adhesive dentistry is a demanding specialty that doesn't forgive much... nevertheless the keystone of any adhesive treatment is to prepare a clean and a rough surface to bond on. For the purpose, AquaCare is the most efficient and polyvalent device I have used so far." **Dr. David Gerdolle, Switzerland.**

Bold New AquaCare Black Edition



“the Difference between just using a device or investing in a Philosophy”

Dr. Dimitris Tsanaktsidis



Sodium Bicarbonate SOFT

Sodium Bicarbonate SOFT, mint flavour and with over 40% reduction in particle size for maximum patient comfort. effective in the removal of biofilm and general prophylaxis supra and sub gingival cleaning.



Sodium Bicarbonate

AquaCare Sodium Bicarbonate provides an Air Polishing prophylaxis treatment that is highly effective in cleaning and stain removal. The 65µm particle size maintains patient comfort during and after treatment.



29µm Aluminium Oxide

Dental Air Abrasion Powder For Fine Cutting, Cavity Preparation and Decontamination.



53µm Aluminium Oxide

Dental Air Abrasion Powder For Coarse Cutting, Cavity Preparation and Decontamination.

EVERY
SINGLE
PATIENT

“the Difference between just using a device or investing in a Philosophy”

Dr. Dimitris Tsanaktsidis



Sylec Bioglass

Dental Air Polishing Powder for Prophylaxis, Cleaning and Polishing.

‘Sylec for AquaCare’ provides an Air Polishing prophylaxis treatment that reduces dental sensitivity, with immediate effect, and also encourages the remineralisation of damaged tooth material, all with a neutral taste. Powered by NovaMin®, the powder occludes exposed dentine tubules blocking nerve access to the affected areas.



50µm Glass Beads

mineral glass-abrasive, for polishing of crowns and bridges, production of mastication surface on occlusal surfaces. Blasting of secondary crowns, removal of oxidation films after the final bake.



110µm Aluminium Oxide

for blasting off precious and non-precious metal alloys. Also for ceramic alloy metal preparation.



CoSil 110µm

Cobalt chrome, titanium, gold, ceramic and HPP surfaces can be coated with CoSil 110µm to form a silicatised adhesive layer which ensures durable retention-free bonding to composites and resins.
110µm Al₂O₃ silica highly coated particles.

POWDERS

When it comes to powder, we believe you deserve the best quality so that your experience with AquaCare never fails to be other than outstanding.

Our new AquaCare cartridges are designed to deliver the same flow rate, recommended AquaCare Media setting between 10-11 o'clock.



AQUASOL

AquaSol safely and effectively delivers a sleeve of fluid surrounding the powder in use.

The advanced 'Venturi' design tip ensures mixing is external of the handpiece and blockage free.

It is patient-friendly with a Vanilla aroma.



AquaSol not available in the US

OUR RANGE OF TIPS

Standard Tip

Suitable for all powders and both handpieces, used mainly for hygiene and clean

iTip

Designed for interproximal and diastema use, though routinely used in many other applications

Plus Tip

Ideal for larger particle size and wider coverage e.g. Hypomineralised cases & hygiene use



AQUACARE STAND

Dimensions:

Without Unit: 640mm

With Unit: 840mm

Width: 340mm

Depth: 340mm

Weight: 5kg



WHY THE STAND?

Specially designed for your AquaCare

Frees up your workspace

Requires only a single point connection
from your air supply

DESCRIPTION

The Stand is available with or without our highly efficient air dryer, providing quality dry air - important in maintaining the powders at an optimal level for the best performance of the AquaCare Twin or Single unit.

SPECIFICATIONS

The AquaCare Stand is delivered flat packed. It is quickly and easily assembled, to provide a mobile, compact unit which can be used between surgeries or operating areas.

PRODUCT FEATURES

Flawless movement around your practice

Lightweight and sturdy construction

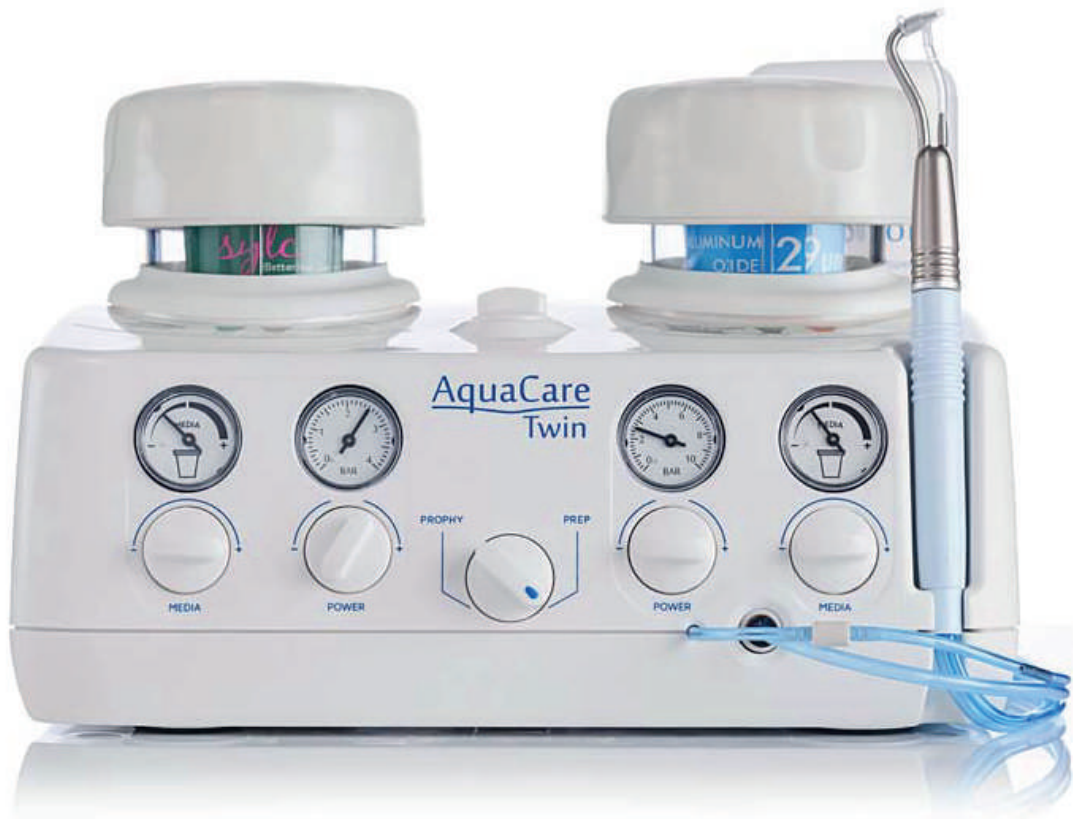
Shelf for foot control

DRYAIR SYSTEM

The DryAir removes any moisture contamination from the compressed air-line used to drive the AquaCare unit. An excellent dry air supply is essential for trouble-free operation of AquaCare units.

CLEANDENTISTRY

Powered By AquaCare



AquaCare | Black Edition

Height : 185 mm
Length : 265 mm

Depth : 240 mm
Weight : 3,066 kg



CLEANDENTISTRY FOR YOU

CONTACTLESS DENTISTRY FOR YOUR PATIENT

AquaCare uses breakthrough technology to deliver CleanDentistry. Comfortable and quick procedures are provided by using a fine stream of fluid combined with a tiny volume of powder directed at the teeth to be treated.

Unlike conventional rotary cutting instruments, the AquaCare handpiece is not in direct contact with the tooth structure, removing only the minimum of sound tooth material and eliminating the risk of chipping and stress fractures.

CAPABILITIES

Adhesive dentistry, Bonding, Clean, Desensitising, Endo, Hygiene, Implant, Laboratory, MI, Ortho, Pediatric, Pekkton, Perio, Remineralising, Restorative dentistry, Stain removal, Veneers, Whitening... Supra or Sub Gingivally.





Bill Marais



Phil Reddington



Dual Arch Titanium and Pekkton
Phil Reddington

AquaCare LabSeries:

Create ideal bonding surfaces on frameworks, attachments, abutments, copings and crowns with precision and ease using AquaCare.

AquaCare units include control knobs to adjust flow volume and pressure level (up to 7 bar).

*The integrated liquid bottle included in the system can be filled with **99.9%** isopropyl alcohol, so blasting and cleaning of frameworks, attachments, abutments, copings and crowns can be completed in one, simple step, creating the ideal bonding surface.*

The precision tips on AquaCare handpieces greatly enhance precision when compared to current laboratory sandblasters.

The AquaCare Twin comes with: 2 handpieces, liquid bottle and disposable tips.

IMPORTANT: Though blast stream is more precise, use of a vacuum or blasting hood is suggested when using AquaCare units.

IMPORTANT: DO NOT position AquaCare unit near heat sources or open flames, especially when utilising isopropyl alcohol in the liquid bottle



Surface Treatment Above Protocols, Robert Arvai



Pekkton, Robert Arvai



AquaCare LabSeries

Height:	185mm
Width:	265mm
Depth:	240mm
Weight:	3.066kg



"Use it, it will change your protocol forever"

Robert Arvai, Switzerland, Ardentia



"I use AquaCare on everything from cleaning and preparing zirconia for cementation, conditioning of my pekkton frames prior to ceramic or composite bonding even treating my titanium frames pre-cementation or composite layering. The AquaCare has become irreplaceable for me."

Phil Reddington, beeverdental.com



"The AquaCare has taken my bonding protocols to an entire new level. When you believe in bonding and work with Pekkton one cannot take any shortcuts. AquaCare is a must for my laboratory."

Bill Marais, disadentalstudio.org



Distributed by:
Titan Dental Solutions Sdn. Bhd. (1211585-W)

No. 20-2, Jalan 27/70A,
Desa Sri Hartamas,
50480 Kuala Lumpur.
Tel: 03 2389 9596 Sales: 012 731 1529

 www.titandental.com.my

 TitanDentalSolutions

 titandentalsolutions